

NetClon 4.0

-NetClon Enterprise

NetClon 4.0 is a network-based system backup, restoration, and cloning solution for computer management and data protection. This solution can be used in various fields such as pc management in cyber cafe, data protection in businesses, or cloning in manufacturing. Now you can perform easy computer management and safe data protection with a single solution, NetClon 4.0.

Features

Remote Backup/Restoration

The Control Center on server can backup and restore remote agents on each client. Backed up data is stored on the server side by image files. NetClon 4.0 adapts file-to-disk restoration for system recovery and file-to-file distribution for system deployments and cloning.

Simultaneous Cloning of Multiple Computers

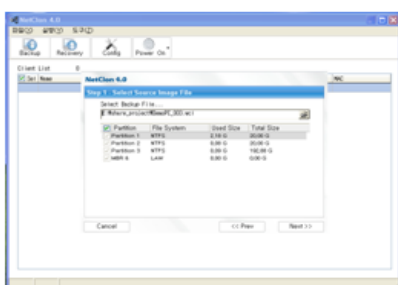
Users can restore more than one computers with a single system image at the same time. This feature is not only useful for manufacturing PCs on which same OS and applications are installed, but also suitable for controlling PCs whose periodic management is necessary. Also, network properties can be configured so that clones can be directly deployed in a new network environment.

Easy IT Resource Management

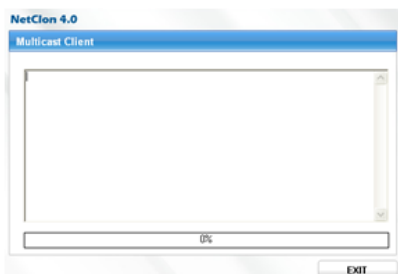
Users can back up heterogeneous remote systems, storing data as image files. Compressed data is store into one or more image files, increasing simplicity, manageability, and mobility. Systematic IT resource management can respond appropriately to system downtime by finding the most proper backup files as quickly as possible.

Simple Server/Client Architecture

The Control Center on server is connected to one or more agents on clients for backup and restoration. The Control Center is executed by an IT manager, and each agent is automatically started by PXE, USB , or pre-installed NetClon 4.0 in a recovery area. A Network address of each agent can be assigned by a DHCP server or configured from the user interface in the Control Center.



Control Center GUI



Agent GUI

System Requirements

Control Center(server)

- Pentium IV
- 1GB RAM
- Windows Professional
Windows 2000 or 2003 Server
Windows Vista Business

Agent(client)

- Pentium IV
- 512MB RAM
- 5GB hard disk space (disk booting)
- PXE Ethernet card (PXE booting)
- USB port (USB booting)
- ODD (ODD booting)

File Systems Supported

- FAT
- NTFS

Headquarters

Digital Empire II 101-1211
486, Sin-Dong, Yeongtong-Gu,
Suwon, Gyunggi-Do, Korea
Tel) 031-216-9891~2
Fax) 031-216-9894

Website:

<http://www.clonix.co.kr>

Easy-to-Use User Interface

The Control Center running on Windows provides an easy interface to control and manage each agent. Agents are automatically connected and displayed on the Control Center GUI. Also, agents can be easily sorted by IP or its name for fast access. After disks or partitions are specified, a list of selected agent systems or data began to be backed up or restored. Users can choose to restore directly to disk or to transfer backup files to each agent in order to satisfy their needs.

Fast Restoring/Cloning Speed

Data is backed up by files which are compressed. NetClon 4.0 provides a faster transfer speed by reducing communication workload from the Control Center to an agent. This feature enables faster restoring and cloning at 25MB/sec on average.

PXE (Pre-Boot eXecution) Services

Without a separate booting CD or USB, an agent can be booted up over network for backup and restoration. If the agent supports PXE, neither is preceding a software installation necessary, nor annoying USB insertion. The Control Center directly accesses the agent, boots it up, and configures an appropriate environment for backup or restoration. The PXE services provision is greatly useful where many agents are scattered and PC access is physically difficult and expensive.

Customization

NetClon 4.0 is designed to extend and modify its features in order to satisfy customer needs. Also, NetClon 4.0 can be provided by OEM software.

